

Sold



50 Karawatha Drive, Mountain Creek



## BEAUTIFULLY REFURBISHED HOME

Positioned walking distance to schools, shops and transport, this tastefully refurbished home offers a wonderful lifestyle for a growing family, retirees or the astute investor.

- Three generous sized bedrooms.
- King sized master with walk in robe and luxury ensuite opens out to the patio.
- The second bathroom caters to the remaining two bedrooms.
- Spacious lounge / dining overlooks lush gardens and entertaining area.
- Open plan designer kitchen with all modern conveniences flows through to the family room.
- Enjoying a north-east aspect, the large patio overlooks the solar heated in ground pool surrounded by lush tropical gardens where outdoor entertaining is made easy.

🏠 3 🚿 2 🚗 2 🌬️ 📺

713 m2

**Price** SOLD for  
\$605,000

**Property Type** Residential

**Property ID** 727

**Land Area** 713 m2

### Agent Details

Beth Macaulay – 0414 961  
372

James Macaulay – 0432  
274 117

### Office Details

RBM Realty  
Shop 2, Professional

- Zoned ducted air conditioning.
- Water tanks x 2 for gardens and topping the pool up.
- Side access for boat etc.
- Freshly painted throughout and new carpets.
- Double garaging with internal access.
- Parkland backdrop with gated access.

Centre, 128 Golf Links Road  
Mountain Creek QLD 4557  
Australia  
07 5444 0005

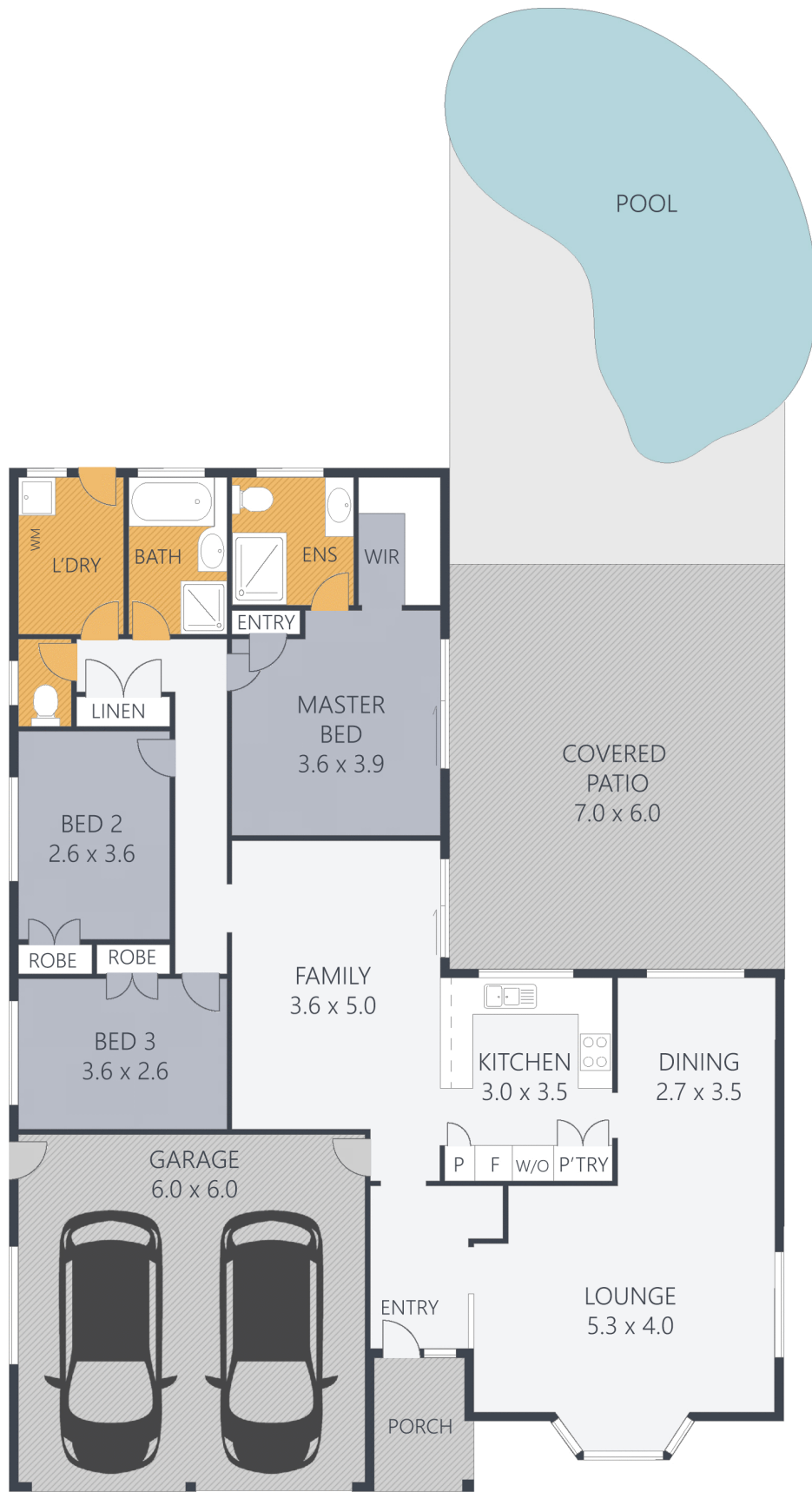


This well priced property in the Mountain Creek school zone is sure to impress as all the hard work has been done.

Unpack and enjoy!

The above information provided has been furnished to us by the vendor/s. We have not verified whether or not that information is accurate and do not have any belief in one way or the other in its accuracy. We do not accept any responsibility to any person for its accuracy and do no more than pass it on. All interested parties should make and rely upon their own inquiries in order to determine whether or not this information is in fact accurate.

3  2  2 



## 50 Karawatha Drive, **MOUNTAIN CREEK**

LIVING: **131m<sup>2</sup>** COURTYARD: **49m<sup>2</sup>** GARAGE: **36m<sup>2</sup>** TOTAL: **216m<sup>2</sup>**

ARTIST'S IMPRESSION ONLY: While every attempt has been made to ensure the accuracy of this floor plan's areas and measurements of doors, windows, rooms and all other items are approximate and no responsibility is taken for any error, omission, or mis-statement. This plan is for illustrative purposes only and should only be used as such by any prospective purchaser.  
Floor plan by: [www.realestatefloorplans.com.au](http://www.realestatefloorplans.com.au)

**RBM**  
REALTY